

MODEL 130-Due'-Series

Wood, Gas, Gas/Wood or Coal Fired Oven



Double entrance with copper trim



Single entrance with stainless steel trim

The 130-Due' is a high capacity oven that features an oval shaped cast body which is ideal for spaces that have limited depth. A curved and domed oval interior allows for optimal convection unlike rectangular or square shaped interiors. Gas fired models include two burner systems with individual controls to evenly heat the oven from both sides. Single or double oven openings are available to further utilize oven functionality.

The Model 130-Due' features a cast body 4 to 6 inches thick using a dense high temperature refractory material with 80% alumina content and additional special additives which stop deterioration from acids emitted by wood combustion. Between the cast oven body and steel outer enclosure is a hardened lightweight insulation mixture (4 to 20 inches thick), which forms a secondary molded body. Our thick cast refractory body and an outer insulation shell maximizes the thermal mass (heat storage) capacity of the oven which allows for an extremely efficient oven that cooks at even non fluctuating temperatures.

A temperature probe is placed 3 1/2" into the dome of the oven instead of under the cooking floor to avoid temperature readout fluctuations caused by food items.

The hearth floor tiles, "Pierre de Boulanger" (Bakers Tiles), which are used in industrial bread baking ovens all across Europe, are refractory material pressed at 8,500 p.s.i. and kiln fired at 2,800 degrees which ceramitizes the material to create a hard and extremely durable tile. Both the body pieces and floor tiles are cast and assembled individually which allows for continuous joints throughout the entire oven. This greatly reduces the possibility of stress cracks due to normal heat expansion and contraction. In addition this allows the ovens to be serviceable which extends their usable life.

Fuel Options:

- 130-Due'-PA – Wood Fire (No utilities required)
- 130-Due'-PAG – Gas Fire (Dual burner)
- 130-Due'-PAGW – Gas/Wood Fire (Single burner)
- 130-Due'-PACB – Coal Fire (Electrical 120VAC/3AMP)

Exterior dimensions – 116 1/4" x 66 1/4"

Interior dimensions – 101" x 48" (Oval)

Oven entrance opening:

Single Entrance - 48" x 12 1/2"

Double Entrance – 26" x 12"

Clearance to combustible sidewalls: 1 inch

Weight: 8000 lb.

Pizza Capacities:

12" Pizzas: 15-17 / 16" Pizzas: 8-10 / 18" Pizzas: 8



Ovens come standard with:

- Factory finished black powder coat paint
- Single or Double oven openings
- Dial thermometer for wood and coal models
- Digital thermometer controller for gas models
- Heavy duty gas burner system with ceramic fire logs
- Cast aluminum door with Teflon handles
- Granite shelf
- Hood cover (stainless or copper trim)
- Stainless steel pizza peel
- 5 year limited warranty on refractory
- 1 year limited warranty on gas / electrical

Custom options and finishes available

Utilities Required:

250,000 BTU - 7" W.C. - LP GAS 10" (for PAG and PAGW only)

1" female NPT Gas Inlet (for PAG and PAGW only)

Two - 120 VAC/ 3 AMP electrical connection (double burner option)



Gas fire oven with ceramic log set



EARTHSTONE OVENS

WOOD, GAS & COAL FIRE OVENS

6717 San Fernando Rd. Glendale CA 91201

Tel: 800-840-4915 - 818-553-1134 Fax: 818-553-1133

www.earthstoneovens.com

Specifications to change without notice. Revised January 2018



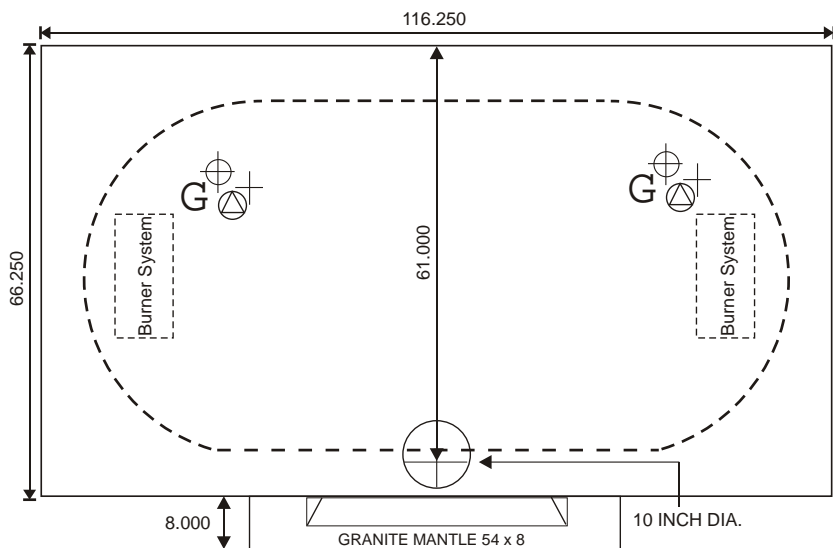
MODEL 130-DUE' SINGLE OPENING

JOB:

ITEM:

FUEL:

Top View



Utilities Required:

For PAG, PAGW and PACB
2 - 120VAC/ 3 AMP electrical connection

For PAG (Double Burner)
250,000 BTU Natural Gas or Propane (LP)
Gas Inlet 1" female NPT
For PAGW (Single Burner)
130,000 BTU Natural Gas or Propane (LP)
Gas Inlet 3/4" female NPT

Total Weight 8,000 lbs

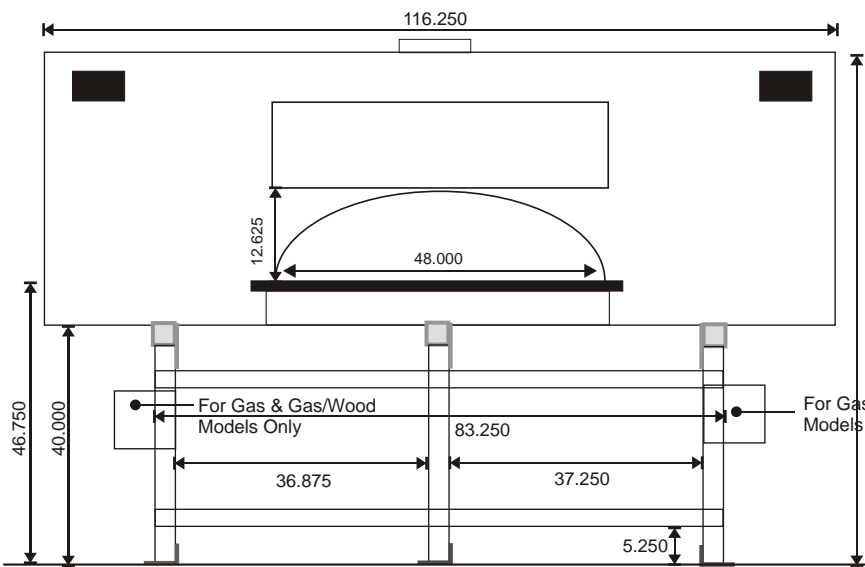
Fuel Type

Wood Fire - 130-DUE'-PA
Gas Fire - 130-DUE'-PAG (Dual Burner)
Wood/Gas Fire - 130-DUE'-PAGW (Single Burner)
Coal Fire - 130-DUE'-PACB

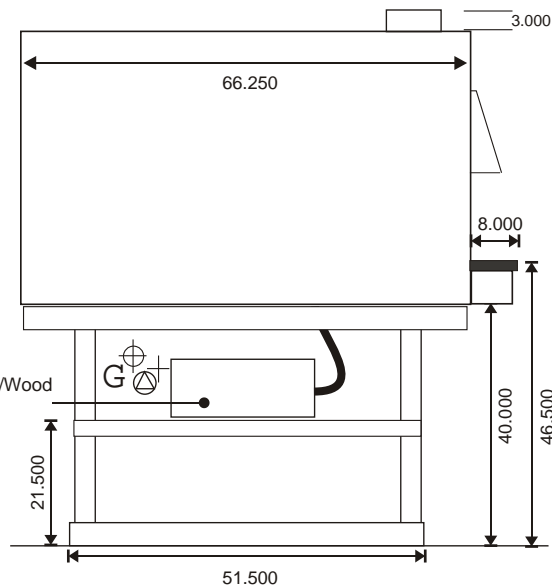
Venting Requirements

Direct connection to a power ventilated ETL/UL listed grease duct rated chimney or ETL/UL listed Type 1 exhaust hood.

Front View



Side View



Revised February 2018

Earthstone Ovens, Inc.
6717 San Fernando Rd
Glendale CA 91201 USA

Toll Free (800) 840-4915
Tel (818) 553-1134
Fax (818) 553-1133

info@earthstoneovens.com
www.earthstoneovens.com



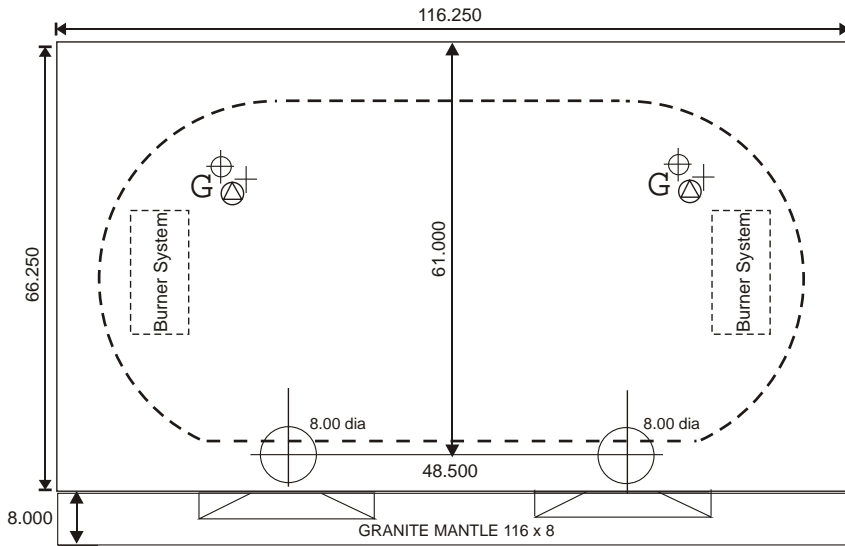
MODEL 130-DUE' DOUBLE OPENING

JOB:

ITEM:

FUEL:

Top View



Utilities Required:

For PAG, PAGW and PACB
2 - 120VAC/ 3 AMP electrical connection

For PAG (Double Burner)
250,000 BTU Natural Gas or Propane (LP)
Gas Inlet 1" female NPT
For PAGW (Single Burner)
130,000 BTU Natural Gas or Propane (LP)
Gas Inlet 3/4" female NPT

Total Weight 8,000 lbs

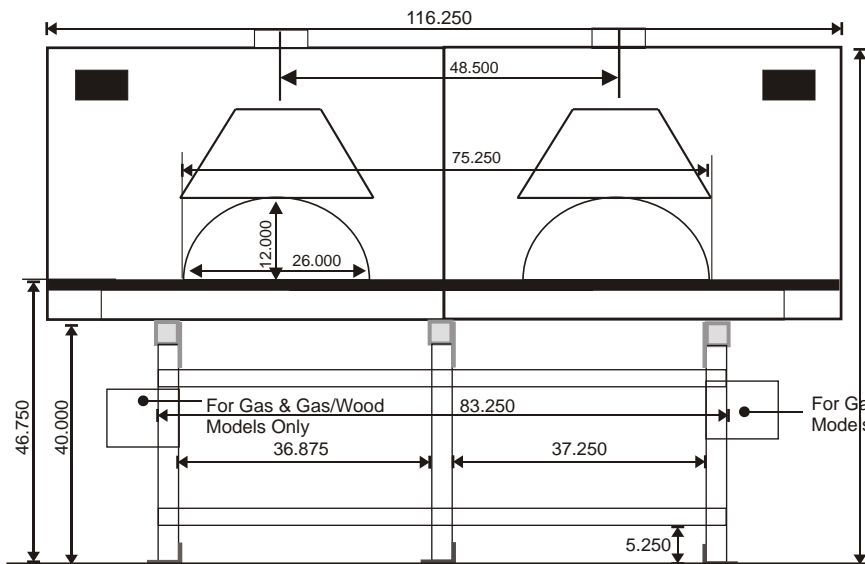
Fuel Type

Wood Fire - 130-DUE'-PA
Gas Fire - 130-DUE'-PAG (Dual Burner)
Wood/Gas Fire - 130-DUE'-PAGW (Single Burner)
Coal Fire - 130-DUE'-PACB

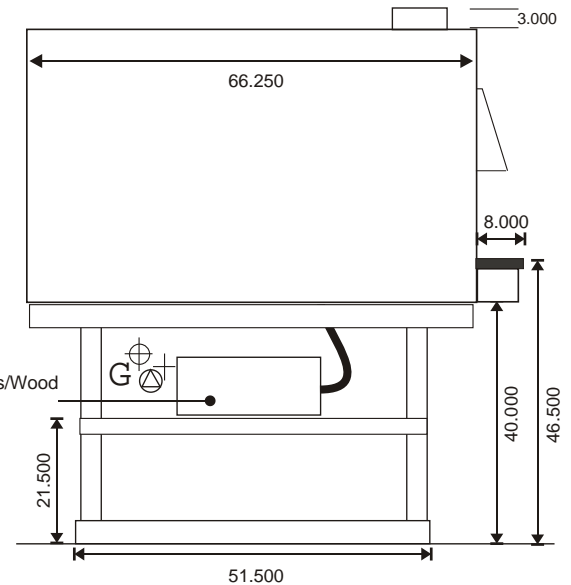
Venting Requirements

Direct connection to a power ventilated ETL/UL listed grease duct rated chimney or ETL/UL listed Type 1 exhaust hood.

Front View



Side View



Revised February 2018

Earthstone Ovens, Inc.
6717 San Fernando Rd
Glendale CA 91201 USA

Toll Free (800) 840-4915
Tel (818) 553-1134
Fax (818) 553-1133

info@earthstoneovens.com
www.earthstoneovens.com